

HOOSIERS BY THE NUMBERS

Your premier source for labor market information for Indiana.



LABOR MARKET REVIEW



November 2018 Labor Market Review

Reported by: Cassie Janes

Regional Workforce Analyst
[Email Cassie](#)
cjanes@dwd.in.gov

Tel: 765-454-4760



Economic Growth Region 8

Statistical Data Report for November 2018, Released January 2019

State Employment and Unemployment

Unemployment rates were lower in November in 6 states, higher in 2 states, and stable in 42 states and the District of Columbia, the U.S. Bureau of Labor Statistics reported. Eighteen states had jobless rate decreases from a year earlier and 32 states and the District had little or no change. The national unemployment rate remained unchanged from October at 3.7 percent but was 0.4 percentage point lower than in November 2017.

Nonfarm payroll employment increased in 4 states in November 2018 and was essentially unchanged in 46 states and the District of Columbia. Over the year, 37 states added nonfarm payroll jobs and 13 states and the District were essentially unchanged.

Hawaii and Iowa had the lowest unemployment rates in November, 2.4 percent each. The rates in Idaho (2.6 percent), Missouri (3.0 percent), and New York (3.9 percent) set new series lows. (All state series begin in 1976.) Alaska had the highest jobless rate, 6.3 percent. In total, 13 states had unemployment rates lower than the U.S. figure of 3.7 percent, 12 states and the District of Columbia had higher rates, and 25 states had rates that were not appreciably different from that of the nation.



Economic Growth Region (EGR) 8

Brown, Daviess, Greene, Lawrence, Martin, Monroe, Orange and Owen Counties

Unemployment Rates by State (seasonally adjusted): November 2018

U.S. - 3.7%

Illinois - 4.2%

Indiana - 3.6%

Kentucky - 4.5%

Michigan - 3.9%

Ohio - 4.6%

Source: U.S. Department of Labor, Bureau of Labor Statistics

Unemployment Rank by County (of 92 counties): November 2018

#6 - Greene (4.9%)

#13 - Owen (4.4%)

#25 - Monroe (3.9%)

#26 - Orange (3.9%)

#30 - Lawrence (3.8%)

#63 - Brown (3.2%)

#71 - Martin (3.1%)

#82 - Daviess (2.9%)

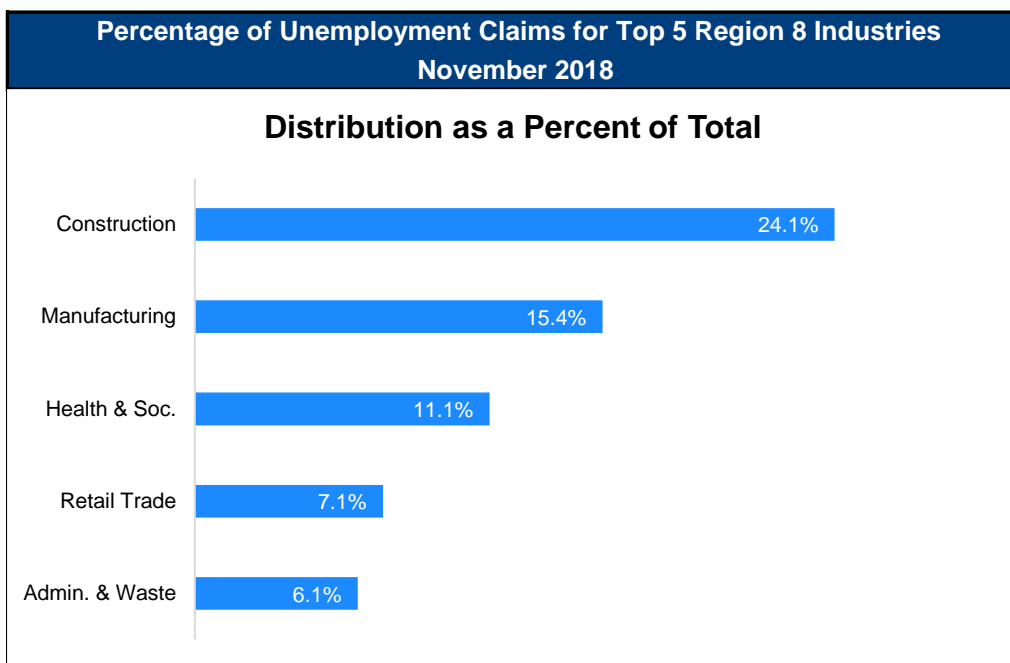
Source: Indiana Department of Workforce Development, Research and Development, Local Area Unemployment Statistics

November 2018 Labor Force Estimates (not seasonally adjusted)						
Area	Labor Force	Employed	Unemployed	Nov-18	Oct-18	Nov-17
U.S.	162,665,000	157,015,000	5,650,000	3.5%	3.5%	3.9%
IN	3,392,369	3,268,504	123,865	3.7%	3.5%	3.2%
EGR 8	149,042	143,344	5,698	3.8%	3.8%	3.5%
Bloomington MSA	77,211	74,171	3,040	3.9%	4.1%	3.5%
Brown Co.	7,713	7,469	244	3.2%	3.1%	2.8%
Daviess Co.	16,373	15,894	479	2.9%	2.9%	2.6%
Greene Co.	13,481	12,827	654	4.9%	4.5%	4.1%
Lawrence Co.	20,811	20,015	796	3.8%	3.8%	4.0%
Martin Co.	5,174	5,015	159	3.1%	2.9%	2.6%
Monroe Co.	68,021	65,385	2,636	3.9%	4.0%	3.5%
Orange Co.	8,279	7,953	326	3.9%	4.0%	3.7%
Owen Co.	9,190	8,786	404	4.4%	4.4%	3.8%
Bloomington	37,446	35,861	1,585	4.2%	4.6%	4.0%

Source: Indiana Department of Workforce Development, Research & Analysis, Local Area Unemployment Statistics | Unemployment Statistics Released: 12/18 | Notes: The data displayed are presented as estimates only. The most recent month's data are always preliminary and are revised when the next month's data are released.

Consumer Price Index (CPI-U Change), Unadjusted Percent Change to November 2018 from				
CPI Item	Nov-17	Oct-18	Nov-17	Oct-18
	U.S. City		Midwest Region*	
All Items	2.2%	-0.3%	1.4%	-0.6%
Food & Beverages	1.4%	0.0%	0.6%	-0.2%
Housing	2.9%	0.1%	2.7%	-0.1%
Apparel	-0.4%	-3.2%	-0.7%	-3.1%
Transportation	2.9%	-1.7%	0.8%	-2.4%
Medical Care	2.0%	0.3%	1.6%	0.3%
Recreation	0.6%	0.2%	-1.4%	-0.1%
Education & Communication	0.2%	-0.6%	-0.1%	-0.6%
Other Goods & Services	2.1%	0.3%	2.4%	0.3%

*Midwest region = Midwest Urban Average. Midwest Region includes Illinois, Indiana, Iowa, Kansas, Michigan, Minnesota, Missouri, Nebraska, North Dakota, Ohio, South Dakota and Wisconsin | Source: U.S. Bureau of Labor Statistics



Source: Indiana Department of Workforce Development, Research and Analysis

WARN Notices

WARN Notices for Region 8 for November 2018				
Company	City	County	# of workers affected	Notice Date

There are no WARN Notices for November 2018 for EGR 8.

Source: Indiana Department of Workforce Development, WARN Notices | For information on WARN Act requirements, you may go to the U.S. Department of Labor Employment Training Administration Fact Sheet:

<https://www.dolela.gov/programs/factsht/warn.htm>

Unemployment Claims: November 2018

Region 8

Initial Claims

11/03/18 - 49(D)

11/10/18 - 58(D)

11/17/18 - 75(D)

11/24/18 - 50(D)

Continued Claims

11/03/18 - 409

11/10/18 - 417

11/17/18 - 428

11/24/18 - 478

Total Claims

11/03/18 - 458

11/10/18 - 475

11/17/18 - 503

11/24/18 - 528

State of Indiana

Initial Claims

11/03/18 - 3,132

11/10/18 - 2,612

11/17/18 - 2,493

11/24/18 - 2,636

Continued Claims

11/03/18 - 13,095

11/10/18 - 12,999

11/17/18 - 11,156

11/24/18 - 12,843

Total Claims

11/03/18 - 16,227

11/10/18 - 15,611

11/17/18 - 13,649

11/24/18 - 15,479

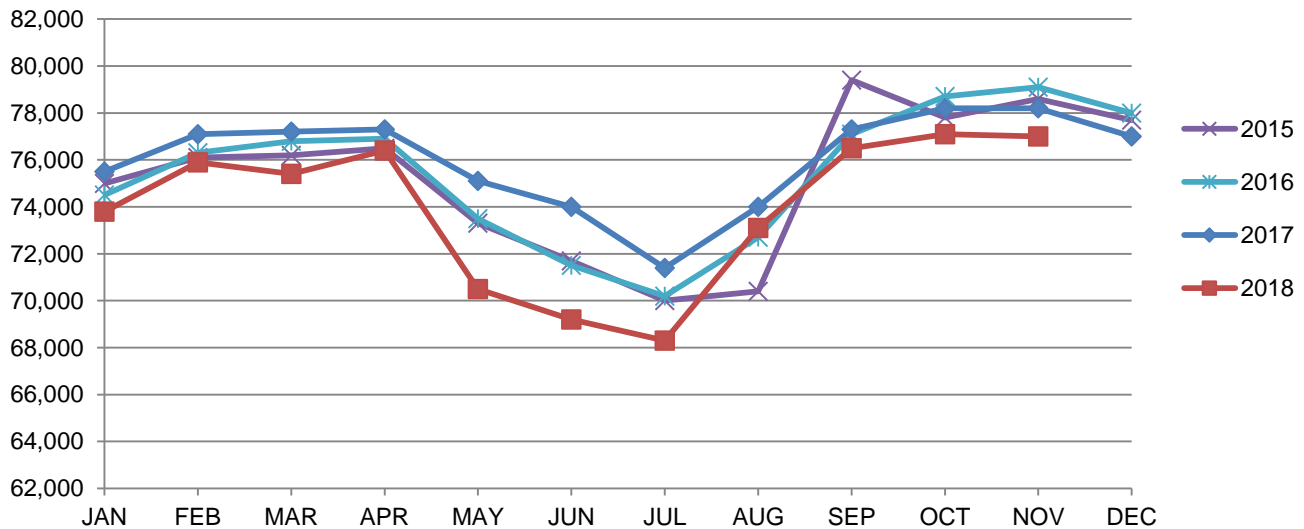
(D) indicates item is affected by non-disclosure issues relating to industry or ownership status |

Source: Indiana Department of Workforce Development, Research and Development

Bloomington MSA							
Wage and Salaried Employment	November 2018			# Change	% Change	# Change	% Change
Industry	Nov-18	Oct-18	Nov-17	Oct-18 to Nov-18	Nov-17 to Nov-18		
Total Nonfarm	77,000	77,100	78,200	-100	-0.1%	-1,200	-1.5%
Total Private	52,400	52,700	53,000	-300	-0.6%	-600	-1.1%
Goods Producing	11,900	12,000	11,700	-100	-0.8%	200	1.7%
Service-Providing	65,100	65,100	66,500	0	0.0%	-1,400	-2.1%
Private Service Providing	40,500	40,700	41,300	-200	-0.5%	-800	-1.9%
Mining, Logging and Construction	2,700	2,800	2,700	-100	-3.6%	0	0.0%
Manufacturing	9,200	9,200	9,000	0	0.0%	200	2.2%
Durable Goods	6,300	6,200	6,200	100	1.6%	100	1.6%
Trade, Transportation, and Utilities	10,200	10,100	10,600	100	1.0%	-400	-3.8%
Wholesale Trade	1,700	1,700	1,700	0	0.0%	0	0.0%
Retail Trade	7,000	6,900	7,500	100	1.5%	-500	-6.7%
Transportation, Warehousing, and Utilities	1,500	1,500	1,400	0	0.0%	100	7.1%
Information	1,100	1,100	1,100	0	0.0%	0	0.0%
Financial Activities	2,800	2,900	3,100	-100	-3.5%	-300	-9.7%
Professional and Business Services	4,800	4,900	5,000	-100	-2.0%	-200	-4.0%
Education and Health Services	10,000	10,000	10,200	0	0.0%	-200	-2.0%
Leisure and Hospitality	9,300	9,400	8,900	-100	-1.1%	400	4.5%
Other Services	2,300	2,300	2,400	0	0.0%	-100	-4.2%
Total Government	24,600	24,400	25,200	200	0.8%	-600	-2.4%
Federal Government	400	400	400	0	0.0%	0	0.0%
State Government	19,000	18,800	19,500	200	1.1%	-500	-2.6%
Local Government	5,200	5,200	5,300	0	0.0%	-100	-1.9%
Local Government Educational Services	2,600	2,600	2,700	0	0.0%	-100	-3.7%
Local Government excluding Educational Services	2,600	2,600	2,600	0	0.0%	0	0.0%

Source: Indiana Dept of Workforce Development, Research and Analysis, Current Employment Statistics

Bloomington MSA Employment Trends



Source: Indiana Department of Workforce Development, Research & Analysis, Current Employment Statistics | Note: Historical data for the most recent 4 years (both seasonally adjusted and not seasonally adjusted) are revised near the beginning of each calendar year, prior to the release of January estimates for statewide data.

Frequently Listed Jobs	
Top 20 job listings in Region 8 in the past month	
Rank	Occupations
1	Conveyor Operators and Tenders
2	Registered Nurses
3	Information Security Analysts
4	Healthcare Practitioners and Technical Workers, All Other
5	Electronics Engineering Technicians
6	Maids and Housekeeping Cleaners
7	Counter Attendants, Cafeteria, Food Concession, and Coffee Shop
8	Social and Human Service Assistants
9	Retail Salespersons
10	Software Developers, Applications
11	Medical Assistants
12	Cooks, Restaurant
13	Heavy and Tractor-Trailer Truck Drivers
14	Licensed Practical and Licensed Vocational Nurses
15	Mental Health and Substance Abuse Social Workers
16	Therapists, All Other
17	Customer Service Representatives
18	Managers, All Other
19	Ambulance Drivers and Attendants, Except Emergency Medical Technicians
20	Grounds Maintenance Workers, All Other

Source: Indiana Workforce Development, Indiana Career Connect

Applicant Pool	
Top 20 occupations desired by applicants on their resumes in the past 12 months	
Occupations	# of applicants
Assemblers and Fabricators, All Other	418
Production Workers, All Other	347
Helpers--Production Workers	213
Laborers and Freight, Stock, and Material Movers, Hand	186
Cashiers	184
Customer Service Representatives	163
Office Clerks, General	148
Construction Laborers	136
Office and Administrative Support Workers, All Other	135
Extraction Workers, All Other	132
Stock Clerks and Order Fillers	130
Heavy and Tractor-Trailer Truck Drivers	115
Managers, All Other	114
Construction and Related Workers, All Other	105
Retail Salespersons	103
Receptionists and Information Clerks	100
Landscaping and Groundskeeping Workers	98
Welders, Cutters, Solderers, and Brazers	96
Carpenters	96
Combined Food Preparation and Serving Workers, Including Fast Food	94

Source: Indiana Workforce Development, Indiana Career Connect

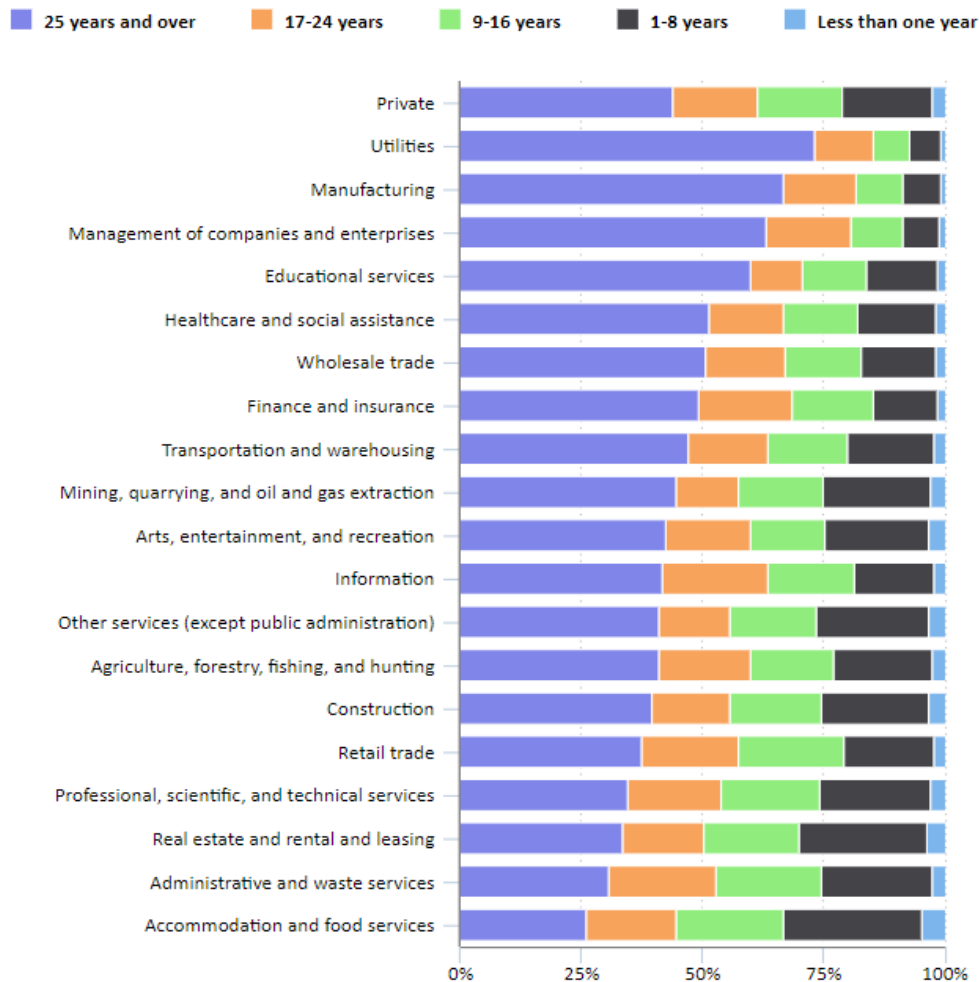
TED: The Economics Daily

43.9 percent of private employment in business establishments at least 25 years old

JANUARY 04, 2019

In March 2018, 43.9 percent of private employment was in business establishments that opened before March 1993. Within the utilities industry, 73.1 percent of employment was in establishments that opened before March 1993.

Percentage of total employment by age of establishment, selected private industries, March 2018



In March 2018, additional industries with 60 percent or more of total employment in establishments that opened before March 1993 include manufacturing (66.7 percent), management of companies and enterprises (63.2 percent), and educational services (60.0 percent).

Business establishments opened for less than one year in March 2018 employed 2.5 percent of total private employment. Among those who worked in the accommodation and food services industry, 4.7 percent worked in establishments opened for less than 1 year. This compared with 0.7 percent of total employment for utilities and manufacturing.

These data are from the [Business Employment Dynamics](#) program.

Bureau of Labor Statistics, U.S. Department of Labor, *The Economics Daily*, 43.9 percent of private employment in business establishments at least 25 years old on the Internet at <https://www.bls.gov/opub/ted/2019/43-point-9-percent-of-private-employment-in-business-establishments-at-least-25-years-old.htm>

